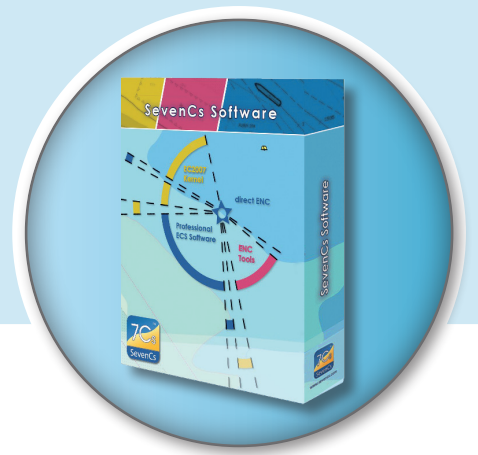




ENC Optimizer

PRODUCT DESCRIPTION

ENC Optimizer helps to produce better electronic charts. Its wide range of optimization functions can be fully integrated into SevenCs Chart Production Workflow. ENC Optimizer has powerful checks to detect and eliminate topology errors and provides automated functions for labor intensive production processes. Different types of data reduction methods can be applied to the overall data set. Data improvement with ENC Optimizer contributes to better performance in the end ECDIS or ECS application.



PRODUCT HIGHLIGHTS

➔ Powerful Topology Checks

➔ Customizable Configurations

➔ Efficient Data Reduction functions

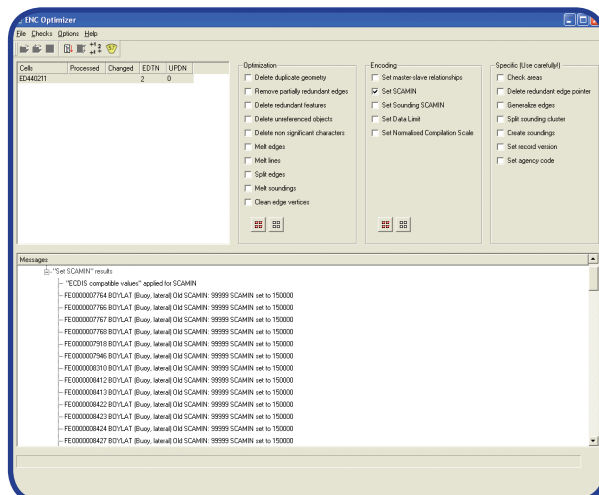
➔ Can be used either stand-alone or interactively with ENC Designer

➔ Automatic Object Encoding

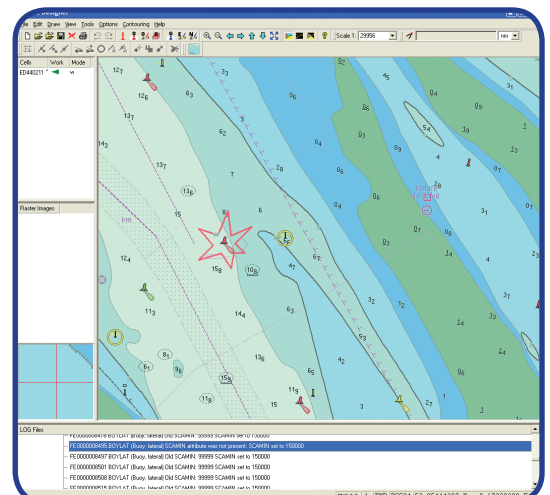
➔ Generates interactive Log Files for Review in ENC Designer

➔ Flexible Feature and Geometry Filters

➔ Command Line Mode for Batch Processing



ENC Optimizer Graphical User Interface



Interactive log file reviewed in ENC Designer

FUNCTIONAL OVERVIEW

Automatic Encoding

Various functions are available to overwrite specific S-57 cell header entries and to automatically manipulate the characteristics of feature objects.

- Adjustment of compilation scale and producing agency code
- Support of different methods to automatically set SCAMIN values (e.g. S-65)
- Dedicated SCAMIN function for soundings
- Set Master and Slave Relations
- Conversion of single sounding features into clusters
- Activation of data limit flag

Data Reduction and Generalization

ENC Optimizer includes various functions to reduce data volume (e.g. merging of individual items, deletion of redundant data, geometry generalization, etc.).

- Removes duplicate objects (features and spatial)
- Deletes partially redundant edges
- Joins line features and edges
- Deletes collinear vertices
- Generalizes edges according to compilation scale

Area Feature Checks

ENC Optimizer integrates special functions to detect and fix erroneous area objects.

- Detects unreferenced edges in area objects
- Reports overlapping Group 1 area features and self-intersecting edges
- Fixes area features with wrong edge orientation

Settings and Filters

ENC Optimizer functions can be applied to a subset of data if required. This is done by means of filters and variable settings.

- Allows the use of different filter types (object classes, attributes, primitive types, group)
- Provides selectable filter rules to be applied during the optimization process

Additional Functions

- Window for presentation of detailed log messages
- Export of log files (e.g. for review in ENC Designer)
- Support of command line mode e.g. for batch processing

Supported Formats and Products

- Vector Formats (R/W): S-57 3.0, 3.1, SevenCs directENC
- Vector Products (R/W): ENC 2.0, IENC 1.02, 2.0, 2.1, AML 1.0, 2.1, 3.0, bENC 1.0, PENC 1.0

SYSTEM RECOMMENDATIONS:

Microsoft Windows XP / Vista / Windows 7
1 GHz or more CPU

256 MB or more RAM

YOUR ENC OPTIMIZER DEALER



SevenCs GmbH · Ruhrstraße 90 · D-22761 Hamburg

Phone +49 (0)40 851 72 40 · Fax +49 (0)40 851 72 4 79 · sales@sevencs.com · www.sevencs.com